

KEEPOWER TECHNOLOGY CO., LIMITED

Address: Fengmenao Industrial Park, Gangtou, Long Gang District, Shenzhen,China

Phone: +86 755 8995 6056

Fax: +86 755 8930 9659

Website: www.keppower.com.cn

E-mail: info@keppower.com.cn

Approve of sample

Customer name				Product number	KP-1600-1S
Date of sample				Customer Type	KP-1600-1S
Edition	03	Page		File number	
Checked by			Approved by		Made by
					HKY
Material number					
Customer confirm					
Advice confirm:					
Certification:					
Date:					

Contents

1 Outline

This specification is suitable 1-cell Lithium ion Battery Protection circuit manufactured by KEEPOWER TECHNOLOGY CO., LIMITED.

2 Application

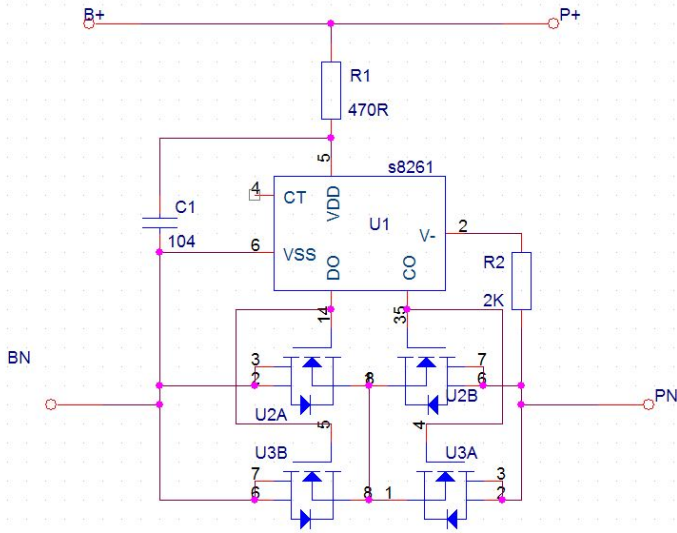
- (1) Lithium-ion rechargeable battery packs
- (2) Lithium-ion polymer battery packs

3 Electrical characteristics

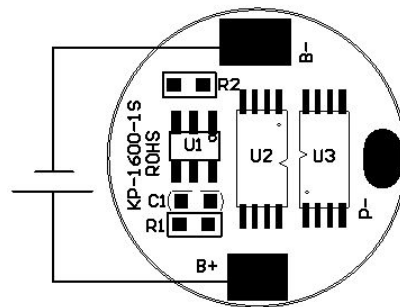
 $T_{opt}=25^{\circ}\text{C}$

Item	Symbol	Content	Criterion
Over charge Protection	V_{DET1}	Over charge detection voltage	$4.325\pm 0.025\text{V}$
	tV_{DET1}	Over charge detection delay time	$1200\pm 250\text{ms}$
	V_{REL1}	Over charge release voltage	$4.075\pm 0.025\text{V}$
Over discharge protection	V_{DET2}	Over discharge detection voltage	$2.5\pm 0.05\text{V}$
	tV_{DET2}	Over discharge detection delay time	$115\pm 33\text{ms}$
	V_{REL2}	Over discharge release voltage	$2.9\pm 0.05\text{V}$
Over current protection	V_{DET3}	Over current detection voltage	$0.15\pm 0.015\text{V}$
	I_{DP}	Over current detection current	6.5-10A
	tV_{DET3}	Detection delay time	9-15ms
		Release condition	Cut load
Short protection		Detection condition	Exterior short circuit
		Short Detection delay time	150-540us
		Release condition	Cut short circuit
Interior resistance	R_{DS}	Main loop electrify resistance	$V_C=3.8\text{V}; R_{DS}\leq 45\text{m}\Omega$
Current consumption	I_{DD}	Current consume in normal operation	$3\mu\text{A}$ Type $8\mu\text{A}$ Max

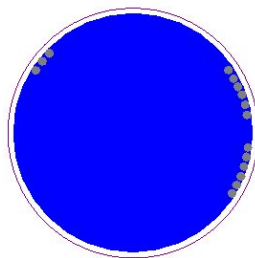
4、 Application Circuit



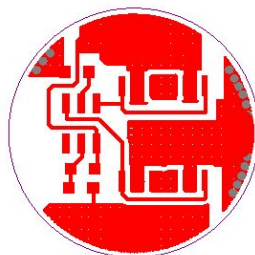
5、 the connect capture



6、 PCB layout



BOTTOMLAYER



TOPLAYER

BOM:

Item	Part No.	Part Name	Q'ty	Specification	Remark
1	U1	Control IC	1	S8261G2J	SEIKO
2	U2,U3	MosFET	2	AO8814	AO
3	R1	RESISTANC E	1	470R	GUOJU
4	R2	RESISTANC E	1	2K	GUOJU
5	C1	CAPACITO R	1	104 50V 20%	GUOJU
7	Ø15.8*0.8mm	PCB	1	KP-1600-1S	MEIYADI

SIZE:

